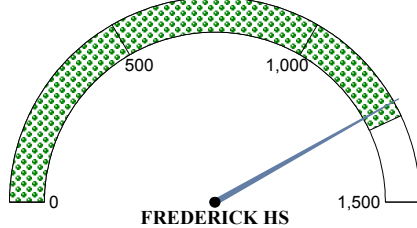


FREDERICK HS**No Child Left Behind Act Annual Report Card 2008-2009****Academic Performance Index (API) and Accountability Data**

The API is a numeric score that measures school and district performance based on a variety of educational indicators. It allows schools and districts to gauge their progress toward improving student achievement. Components of the API are used to meet reporting requirements in the *No Child Left Behind Act* (Public Law 107-110).

School API Score for Regular Education Students



FREDERICK HS has a Total API of 1255

The scale for API scores ranges from 0-1500 with 1289 as the current state average for regular education students.

No Child Left Behind Act Statewide Performance Benchmarks for 2008-2009:

Mathematics API - 932 Reading API - 914

Percent of Students Tested - 95%

Attendance Rate API - 664

Graduation Rate API - 882

Legend:

**** represents missing data or data involving small numbers

CI = met target with confidence interval applied

SH = met target by meeting safe harbor criteria

Additional Indicators for Federal AYP

Total Graduation 2008: 1167 (82.8%)

***Graduation 4 year 2008:** 1001 (74.1%)

Attendance: 1264 (96.2%)

Attendance is used for the additional indicator in AYP determinations for elementary and middle schools.

*Graduation rate for students who graduated in the standard number of years and used as the additional indicator in AYP determinations for high schools and districts.

Student Group	Mathematics API	Reading API	% Students Tested	
			Math	Reading
All Students				
All	1242	1109	100	100
Male	1247	****	****	****
Female	1236	1184	****	****
Black	****	****	****	****
Amer. Indian	****	****	****	****
Hispanic	****	****	****	****
Asian	****	****	****	****
White	1318	****	****	****
Other	****	****	****	****
Econ. Disadv.	1190	907 SH	****	****
Migrant	****	****	****	****
Students with Individualized Education Programs (IEP)				
IEP	****	****	****	****
English Language Learner Students (ELL)				
ELL	****	****	****	****
Regular Education Students				
Regular Education	1284	1313	100	****

For Adequate Yearly Progress (AYP) determinations, each student group is required to meet or exceed the Performance Targets (excluding Male, Female and Migrant groups) for 2008-2009.

Student Groups must have at least 30 students per subject to receive a math or reading API score.

Percent of Students Tested is calculated only for student enrollment of at least 40 students per subject and subgroup at time of test administration.

Accountability calculations applied the 2008 achievement standards for the Grades 3-8 general assessment.

FREDERICK HS***No Child Left Behind Act Annual Report Card 2008-2009*****Accountability Data*****No Child Left Behind Act School Identifications***

Adequate Yearly Progress FREDERICK HS has made adequate yearly progress.

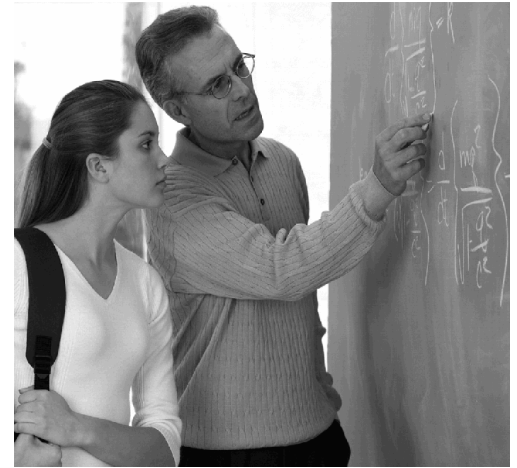
***School in Need of Improvement:** NO

Schools that have failed to make AYP for two consecutive years (based on the same subject) will be designated as in "Need of Improvement".

Professional Qualifications of Teachers

The information below represents professional qualifications of teachers who teach in the core academic subjects: English, reading or language arts, mathematics, science, foreign languages, civics and government, economics, arts, history, and geography.

Professional Qualifications of Public Elementary and Secondary Teachers in Core Academic Subjects	Bachelors	Masters	Post-Masters or Doctorate
Percent of Teachers	84.2%	15.7%	0.0%



Percent of Teachers with Emergency Certificates: 0%

The 2008-2009 data includes the federally approved High, Objective, Uniform State Standard of Evaluation (HOUSSE) criteria for defining "Highly Qualified" special education teachers.

Percent of Classes Taught by Teachers Considered "Highly Qualified" and "Non-Highly Qualified" According to Federal Law:

	Highly Qualified	Non-Highly Qualified
Total for School:	100.0%	0.0%

*Low Poverty Schools - Schools in bottom 25% when ranked from highest to lowest by the percentage of students who qualify for the free and reduced price lunch program.

**High Poverty Schools - Schools in the top 25% when ranked from highest to lowest by the percentage of students who qualify for the free and reduced price lunch program.

FREDERICK HS

No Child Left Behind Act Annual Report Card 2008-2009

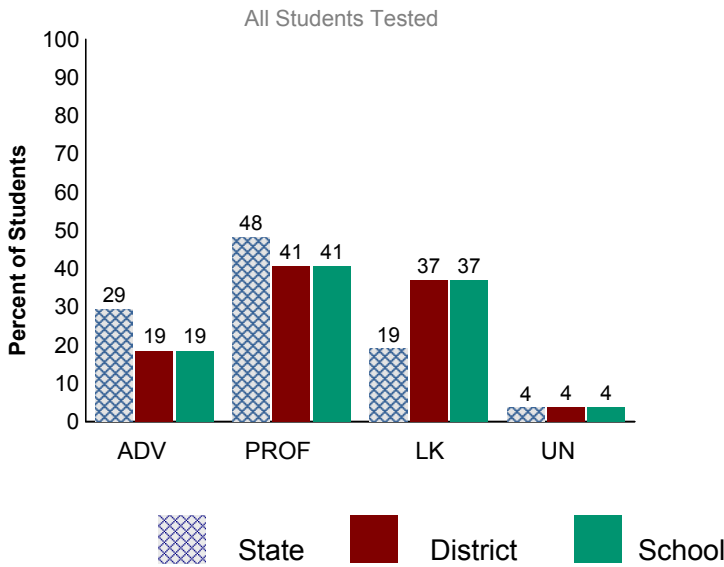
Oklahoma School Testing Program (OSTP)

End-of-Instruction

Oklahoma Core Curriculum Tests

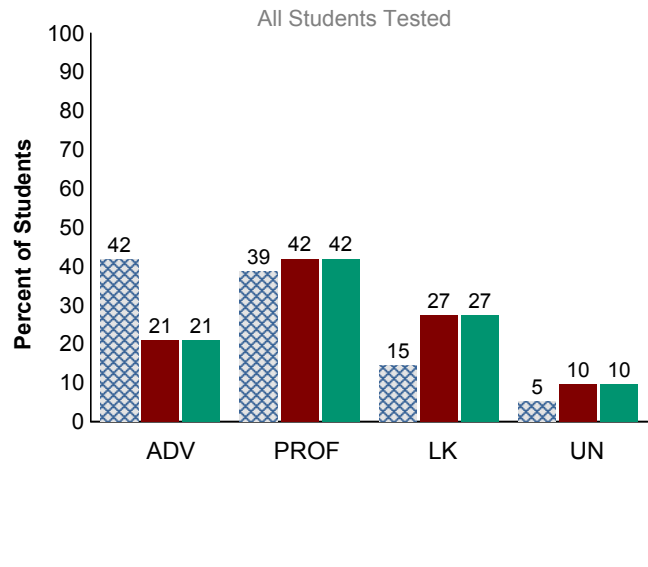
The Oklahoma Core Curriculum Tests measure mastery of students' skills on the *Priority Academic Student Skills (PASS)*. Individual test scores for each student as well as detailed group summary reports are sent back to the schools, providing valuable data for administrators and teachers to target program improvement, addressing individual student strengths and weaknesses, and providing parents with an idea of their child's accomplishments. Results below include all students (full academic year and non-full academic year).

State, District, and School Reading Results



Data involving small numbers will be suppressed

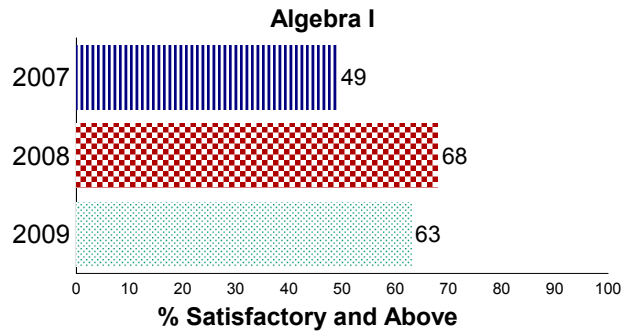
State, District, and School Math Results



District Trend Data

All Students Tested Spring Results Only

The English II assessment was re-aligned and recalibrated in the 2008-2009 school year. Trend data is not available



Legend:

ADV - Advanced Performance Level

PROF - Proficient Performance Level

LK - Limited Knowledge Performance Level

UN - Unsatisfactory Performance Level

For confidentiality of student records data involving small numbers is suppressed.

FREDERICK HS**No Child Left Behind Act Annual Report Card 2008-2009**

Oklahoma School Testing Program (OSTP)

End of Instruction**School Results**

The tables below present Math and Reading results from the 2008-2009 school year. The results are reported in four performance levels by specific student groups. These test results include all students tested (full academic year and non-full academic year) for each of the student groups. See legend at bottom.

	# Tested	Reading				# Tested	Math			
		%ADV	%PROF	%LK	%UN		%ADV	%PROF	%LK	%UN
Results From The OCCT EOI SPRING										
All	54	19	41	37	4	62	21	42	27	10
Amer. Indian	3	****	****	****	****	8	50	0	50	0
Asian	1	****	****	****	****		****	****	****	****
Black	4	****	****	****	****	5	0	40	20	40
Hispanic	19	0	26	63	11	12	0	42	50	8
White	27	33	52	15	0	37	24	51	16	8
Female	27	19	48	30	4	31	16	45	29	10
Male	27	19	33	44	4	31	26	39	26	10
Econ. Disadv.	29	7	35	52	7	35	14	43	31	11
Migrant	1	****	****	****	****	4	****	****	****	****
IEP Accom.	1	****	****	****	****	2	****	****	****	****
ELL	15	0	13	73	13	10	20	20	60	0
Regular Education	39	26	51	23	0	50	22	48	20	10
Results From The Oklahoma Alternate Assessment Program (OAAP/PORTFOLIO)										
IEP w/o Accom.		****	****	****	****	1	****	****	****	****
Results From The Oklahoma Modified Alternate Assesment (OMAAP)										
IEP w/o Accom.	1	****	****	****	****	1	****	****	****	****
IEP Accom.	4	****	****	****	****	4	****	****	****	****

Legend:

%ADV - Advanced Performance Level

%PROF - Proficient Performance Level

%LK - Limited Knowledge Performance Level

%UN - Unsatisfactory Performance Level

For confidentiality of student records: ++++ More than 95% scored above Proficient

---- More than 95% scored below Satisfactory

**** missing data or data involving small numbers

FREDERICK HS**No Child Left Behind Act Annual Report Card 2008-2009**

Oklahoma School Testing Program (OSTP)

Science Grades 5, 8 and Biology I

The tables below present Science and Biology I results from the 2008-2009 school year. The results are reported in four performance levels by specific student groups. These test results include all students tested (full academic year and non-full academic year) for each of the student groups. See legend at bottom.

	Science					%Tested
	# Tested	%ADV	%SAT/PROF	%LK	%UN	
Grade EOI						
Results From The OCCT EOI SPRING						
All	62	21	40	21	18	100
Amer. Indian	8	38	25	13	25	100
Black	5	20	20	0	60	100
Hispanic	12	0	25	33	42	100
White	37	24	51	22	3	100
Female	31	19	32	32	16	100
Male	31	23	48	10	19	100
Econ. Disadv.	35	23	29	26	23	100
Migrant	4	****	****	****	****	100
IEP Accom.	2	****	****	****	****	100
ELL	9	0	33	33	33	100
Regular Education	51	26	41	20	14	100
Results From The Oklahoma Modified Alternate Assesment (OMAAP)						
IEP w/o Accom.	1	****	****	****	****	100
IEP Accom.	4	****	****	****	****	100

Legend:

%ADV - Advanced Performance Level

%SAT/PROF - Satisfactory/Proficient Performance Level

%LK - Limited Knowledge Performance Level

%UN - Unsatisfactory Performance Level

For confidentiality of student records: +++++ More than 95% scored above Satisfactory

---- More than 95% scored below Satisfactory/Proficient

**** missing data or data involving small numbers